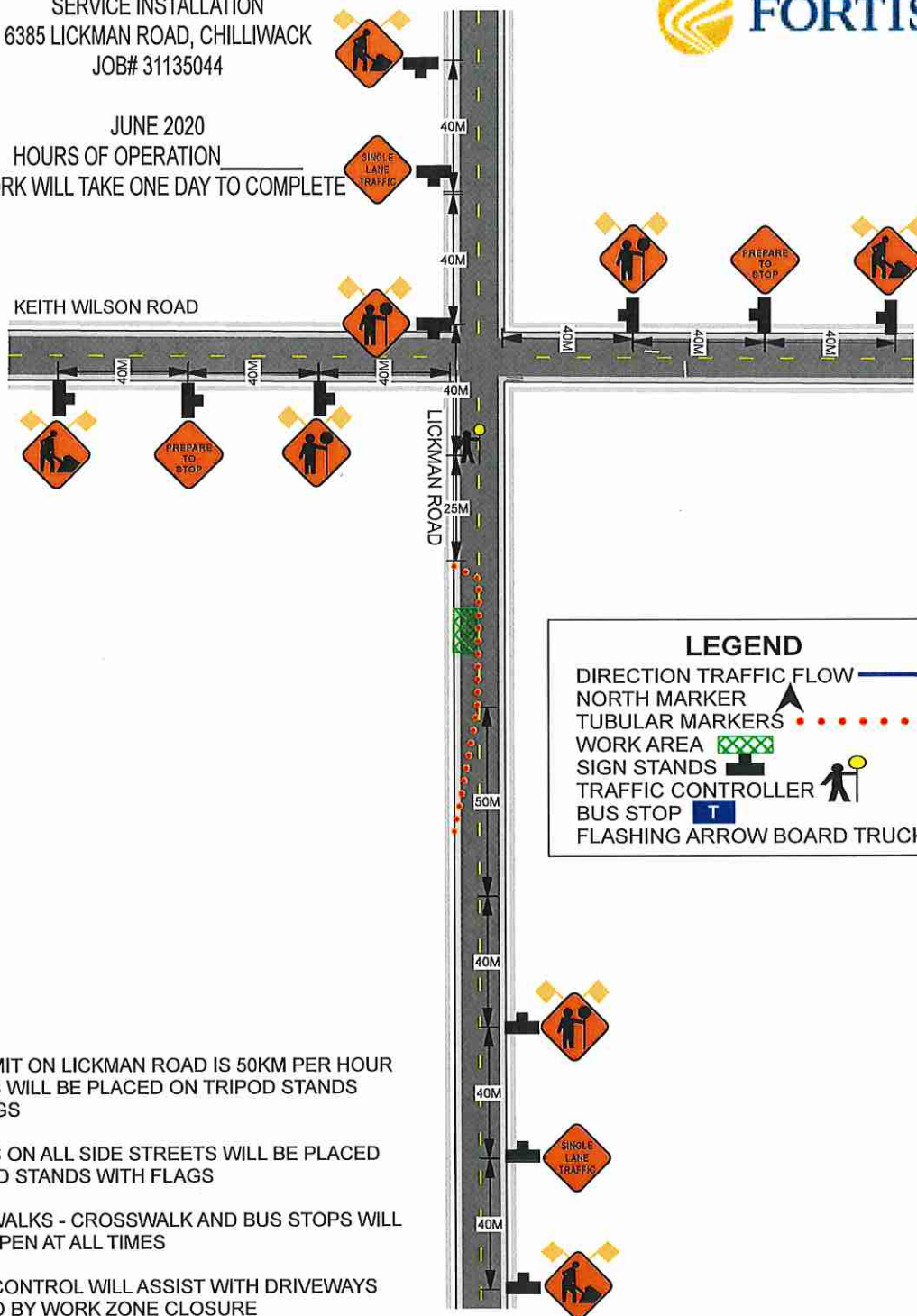




**FORTIS BC**

KEITH WILSON ROAD



DIRECTION TRAFFIC FLOW

NORTH MARKER

TUBULAR MARKERS

WORK AREA

SIGN STANDS

TRAFFIC CONTROLLER

BUS STOP

FLASHING ARROW BOARD TRUCK

SPEED LIMIT ON LICKMAN ROAD IS 50KM PER HOUR  
ALL SIGNS WILL BE PLACED ON TRIPOD STANDS  
WITH FLAGS

ALL SIGNS ON ALL SIDE STREETS WILL BE PLACED  
ON TRIPOD STANDS WITH FLAGS

ALL SIDEWALKS - CROSSWALK AND BUS STOPS WILL  
REMAIN OPEN AT ALL TIMES

TRAFFIC CONTROL WILL ASSIST WITH DRIVEWAYS  
EFFECTED BY WORK ZONE CLOSURE